

# Broward County Public Schools

## Naviance Implementation at-a-Glance

### 2017 – 2018

#### HISTORICAL CONTEXT

Naviance implementation began in Broward County Public Schools in October 2015. After all initial configuration was completed, students began accessing the system in January 2016. Since the beginning, the Naviance team and the Broward School Counseling and BRACE Advisement team have worked tirelessly to implement Naviance with fidelity and continue to innovate and drive adoption within the schools as well as departments across the district.

**120K+**  
STUDENTS

**91**  
SCHOOLS

**8K+**  
STAFF

**YEAR 1**  
CONFIGURATION  
& ROLLOUT

**YEAR 2**  
INCREASED  
ADOPTION

**YEAR 3**  
INCREASED  
ENGAGEMENT

**YEAR 4**  
CONTINUED  
INNOVATION

#### CONTINUED INNOVATION

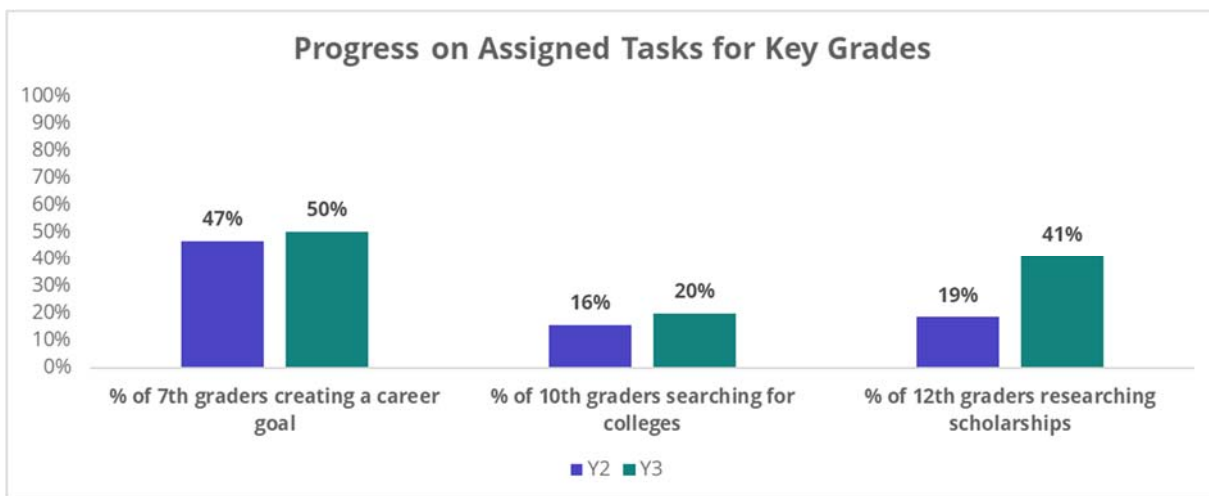
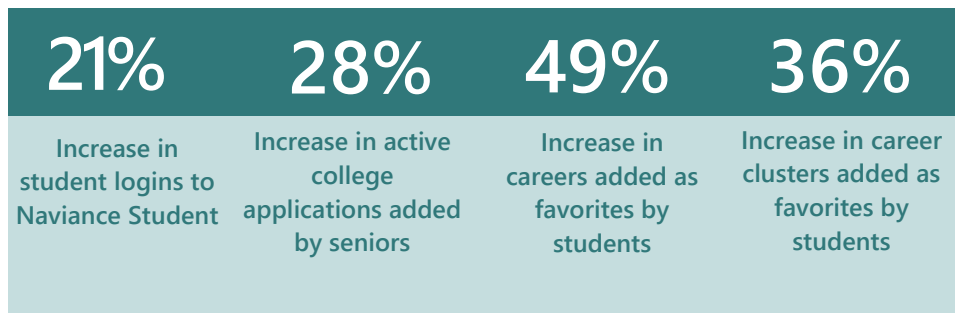
Reimagining Middle School: BCPS used Naviance to administer a survey to all middle school students to support the Reimagining Middle Grades project. The survey had a response rate of 33%.

Personalization for Academic and Social Learning (PASL): This program represents a systematic, school-wide approach to meeting the academic and social emotional needs of students. Naviance was presented as an option to help PASL schools track and implement their various initiatives.

Canvas Project with Dept. of Secondary Learning: 28 custom lesson plans aligned with Naviance tools, the Annual School Counseling Plan, and FLDOE curriculum standards are being developed to allow teachers easier access to Naviance lesson plans via Canvas.

### STUDENT ENGAGEMENT

Percentages represent increases from Year 2 to Year 3



### STRATEGIC ALIGNMENT

Naviance implementation supports the Broward Strategic Plan in key areas:  
 Middle Grades Learning, College and Career Readiness  
 Family and Community Engagement, Closing the Achievement Gap



# Broward County Public Schools

## Naviance Implementation at-a-Glance

### 2017 – 2018

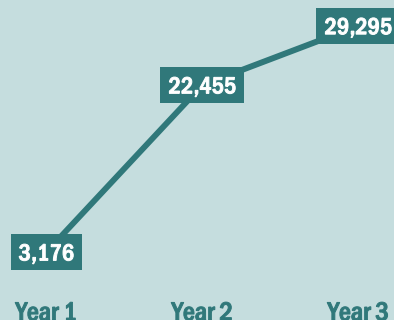
#### PROFESSIONAL LEARNING

Since Fall 2015, Naviance trainers, in conjunction with district staff, have offered 25 days of onsite training to counselors, BRACE advisors, teachers, registrars, and community organizations to train them on the following topics:

- Introduction to Naviance
- Career Research and Assessments
- College Research Tools
- Naviance Collaborative Tools
- Success Planning with Naviance
- College Application Tools & Naviance eDocs
- Naviance Reports



Increase in Total Staff Logins



Average Logins per Student



#### STUDENT ADOPTION

|  |   |  |  |
|--|---|--|--|
| <b>91%</b>   | <b>71%</b>  | <b>500K</b>                            | <b>583%</b>  |
| Of students have logged in at least once during SY '17-'18 | Of students have logged in at least twice during SY '17-'18 | Total student logins during SY '17-'18 | Increase in total student logins from Year 1 to Year 3 of implementation |

#### Naviance + Broward Partnership

##### SUMMER INSTITUTE

BCPS attended Naviance Summer Institute 2017 in Orlando, FL and Hobsons Summer Institute 2018 in Palm Desert, CA. The 2018 Summer Institute represents the first time Hobsons is bringing together K12 institutions and Higher Education institutions at one conference to share learning and best practices from both sides of the desk.

##### PRODUCT LAUNCHES

The BCPS team has been instrumental in helping to guide Naviance product development through participating in the beta launch of our Clever for staff and student integration, as well as providing feedback to the Naviance Product team on new and existing products and offerings.

##### NAVIANCE ADVISORY BOARD

BCPS' Chief Academic Officer, Dan Gohl, is one of twelve members of Naviance's Advisory Board. The Advisory Board is comprised of members from schools and districts across the country. The group meets quarterly to discuss market trends and challenges they face as leaders in education, as well as provide feedback on their experiences with Naviance.

